

# NY RAIME

## New York Regional Internal Medicine Educators

### President

**Georgina Osorio, MD, MPH**

Associate Program Director,  
Mount Sinai Morningside/West



### Past President

**Vasundhara Singh, MD**

Associate Program Director,  
Mount Sinai Morningside/West



### Physician Councilor

**Eric Barna, MD, MPH**

Associate Program Director,  
Mount Sinai Hospital



### Secretary

**Susan Collins, MD**

Program Director,  
Nuvance Health



### Physician Councilor

**Conrad Fischer, MD**

Program Director,  
Brookdale Hospital Medical Center



### Physician Councilor

**Jared Scott Honigman, DO**

Associate Program Director,  
Northwell Health System



### Physician Councilor

**Eileen Yoon Ji Kim, MD**

Associate Program Director,  
Northwell Health System



### Physician Councilor

**Zubin Tharayil, MD**

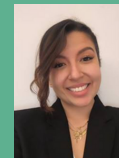
Program Director,  
Long Island Community Hospital



### NY RAIME Administrator

**Mariah Soria**

Residency Program Manager,  
Mount Sinai Morningside/West



**2024--2025**

